



Carleton University Transcends Education, Spaces and People.

Transcending Moodboard



Carleton University Transcends it's University members so that they go beyond the range or limits of something abstract,

a conceptual field or division, to rise above, or cut across the norm of standard reach.

Transcending Storyboard



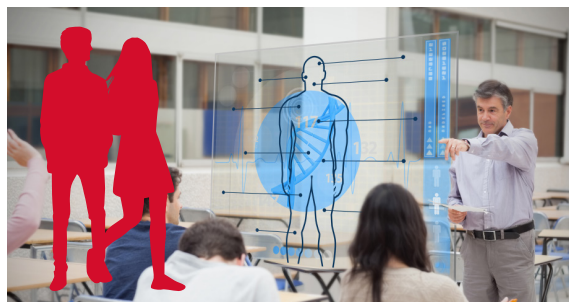
1. Student, Industry Representative or Staff/Faculty members enters Carleton University in 2030. The participate is excited, and nervous, but is ready to embark on this new adventure.



2. Personal digital assist guides course choices based on profile, interest and career direction. Organizes calendars, schedules, deadlines/ meetings, housing, finances, reminders, location, collaboration and social activities and checks on well being.



3. Members use state-of-the-art, customizable spaces. Spaces that enhance already existing infrastructures by connecting them in raised common areas, which promote research, collaboration and industry/community initiatives.



5. State-of-the-art technology and equipment provide a competitive advantage. Cutting edge faculty members deliver up and coming research techniques and methods.



4. Community, industry and global initiatives fostered by collaborative environments that entice domestic and international partnerships.



6. Members feel accomplished and empowered by newfound knowledge and transcendence, which was brought to him by Carleton University.

Carleton University provides the means for personalized program curriculum, customizable spaces, transcending experiences, and connections.

Carleton University transcends it's members in emerging technologies, research techniques, elevated and evolving spaces for collaboration and wellbeing.



Carleton
UNIVERSITY

Design Proposal 2030

Transcending

Carleton University Transcends Education, Spaces and People.

Transcending App Poster

This poster will promote Carleton University's education and space initiatives through its app landscape. It will entice Carleton and industry members to navigate the app to receive a better university experience,

in which it will utilize all the transcending objectives; education, spaces and people. The highlighted sections are the key features.



Carleton
UNIVERSITY

Transcends University Experience

Download
cuTranscends
for the full CU
experience.

Customized Course Selection



Locate | Spaces



Personal Assistant



Housing | Financial | Help



Schedule



Reminders

Health | Social | Activities



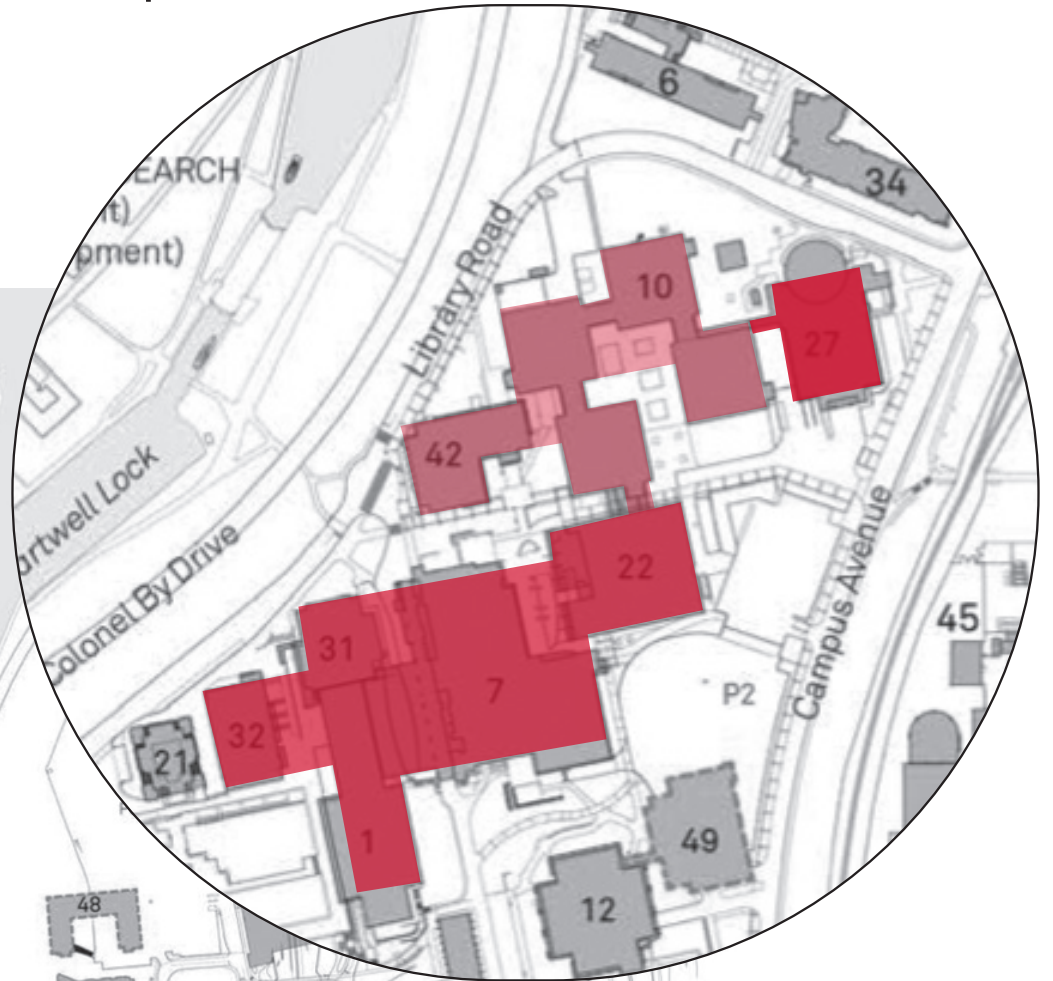
carleton.ca/cutranscends-app



Transcending Spaces Map

- Wellness Centre
- Entrepreneur Centre
- Research & Collaboration Centre

- 1 TORY BUILDING
- 2 MacODRUM LIBRARY
- 3 PATERSON HALL
- 4 SOUTHAM HALL
- 5 RENFREW HOUSE
- 6 LANARK HOUSE
- 7 UNIVERSITY CENTRE
- 8 GYMNASIUM
- 9 ATHLETICS BUILDING
- 10 C.J. MACKENZIE BUILDING
- 11 MAINTENANCE BUILDING
- 12 STEACIE BUILDING
- 13 HERZBERG LABORATORIES
- 14 RUSSELL - GRENVILLE HOUSE
- 15 LOEB BUILDING
- 16 H.H.J. NESBITT BIOLOGY
- 17 ROBERTSON HALL
- 18 GLENGARRY HOUSE
- 19 RESIDENCE COMMONS
- 20 PARKING GARAGE
- 21 DUNTON TOWER
- 22 ARCHITECTURE BUILDING
- 23 ST. PATRICK'S BUILDING
- 24 SOCIAL SCIENCE RESEARCH BUILDING
- 25 LIFE SCIENCE RESEARCH BUILDING
- 26 STORMONT-DUNDAS HOUSE
- 27 MINTO C.A.S.E.
- 28 COLONEL BY CHILDCARE CENTRE
- 29 CARLETON TECHNOLOGY & TRAINING CENTRE
- 30 LEEDS HOUSE
- 31 AZRIELI THEATRE
- 32 AZRIELI PAVILION
- 33 NATIONAL WILDLIFE RESEARCH CENTRE
- 34 PRESCOTT HOUSE
- 35 FIELDHOUSE
- 36 ALUMNI HALL
- 37 HUMAN COMPUTER INTERACTION BUILDING
- 38 VISUALIZATION & SIMULATION BUILDING
- 39 CARLETON ICE HOUSE
- 40 TENNIS CENTRE
- 41 FRONTENAC HOUSE
- 42 CANAL BUILDING
- 43 RIVER BUILDING
- 44 LENNOX - ADDINGTON RESIDENCE
- 45 GROUNDS BLDG
- 46 NEW PARKING GARAGE
- 47 URBANDALE CENTRE FOR HOME ENERGY RESEARCH
- 48 Proposed New Residence (under development)
- 49 Proposed New Health Centre (under development)
- 72 BRONSON SUBSTATION
- 73 KEITH HARRIS STADIUM



Carleton University has three transcending spaces; Wellness Centre, Entrepreneurial Centre, Research and Collaboration Centre. These centres are raised above the existing paces and are customizable.

The spaces can evolve according to the users' needs. The spaces are used by Carleton University members, the community, industry representatives and global research initiatives.